

SOMPLAN 350

Inspired by natural beauty, Somplan 350 has a fresh and soft feeling. This non-directional design is suitable for heavy traffic areas.



THE ULTIMATE FLOORING EXPERIENCE

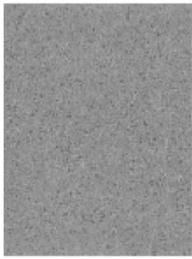


SOMPLAN 350

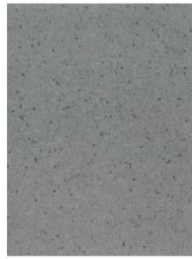
THE NEUTRALS



306007 015



306007 016



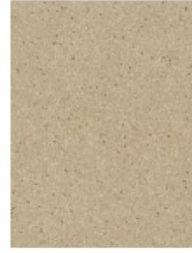
306007 017



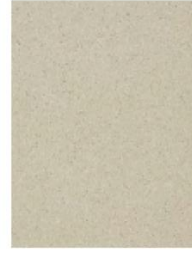
306007 018



306007 009



306007 019



306007 021



306007 020

SOMPLAN 350

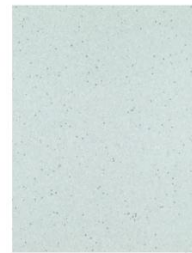
THE SOFT



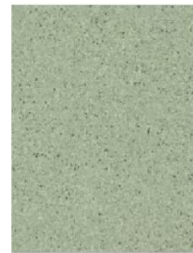
306007 001



306007 002



306007 012



306007 025



306007 004



306007 005



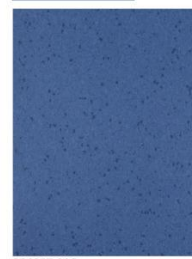
306007 006



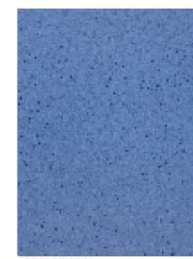
306007 007

SOMPLAN 350

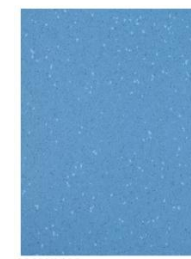
THE FRESH



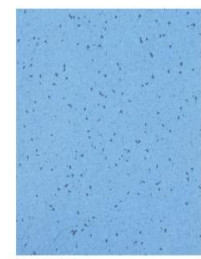
306007 010



306007 024



306007 009



306007 008



306007 026



306007 011



306007 022



306007 023



SOMPLAN 350

TECHNICAL DATA

TECHNICAL DATA	STANDARD	SOMPLAN 350
CLASSIFICATION		
Homogeneous Compact Vinyl Floorcovering	ISO 10581	
Classification	ISO 10874	Classes:
	Commercial	34
	Industrial	43
TECHNICAL CHARACTERISTICS		
Total thickness	ISO 24346	2.0mm
Dimension - Length	ISO 24341	231m
Dimension - Width	ISO 24341	2m
Total weight	ISO 23997	3300g/m ²
Surface treatment		PUR
TECHNICAL PERFORMANCES		
Binder content	ISO 10581	Type II
Dimensional stability	ISO 23999	≤ 0.40% (Rolls)
Curl resistance to heat	ISO 23999	≤ 4.00mm
Reaction to fire	EN 13501-1	BE-s1
Residual indentation	ISO 24343-1 measured value	0.03mm
	ISO 10581 requirement	≤ 0.10mm
Castor chair test	ISO 4918 - EN 425	No damage
Thermal resistance	EN ISO 10456	0.04 (m ² ·K)/W
Light fastness	ISO 105 B02	≥ 6
Chemical resistance	ISO 26987	Good resistance
Slip resistance	DIN 51130	R9
	EN 13893	μ _s ≥ 0.3
Static electrical charge	EN 1815	≤ 2KV
Bacteria resistance	ISO 846-C	Doesn't favour growth
Flexibility	ISO 24344	No crack
ENVIRONMENT		
TVOC 28 days AgBB test	ISO 16000	< 10ug/m ³
Recyclable		100%
Plasticizer		Phthalate-free technology

The above information is subject to modification for the benefit of further improvement.

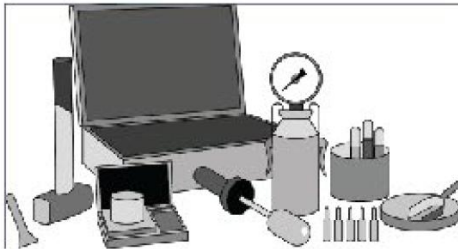
Tarkett's instructions regarding installation, cleaning and maintenance should be observed. Please contact Tarkett at the address shown for these instructions.



INSTALLATION INSTRUCTIONS

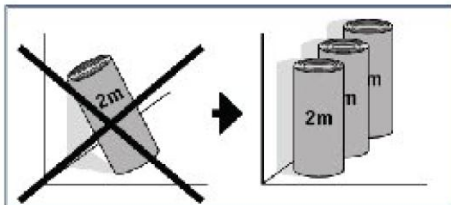
1. Subfloor control

- The subfloor must be clean, hard, flat and free from all types of marks, debris & residues, and not exposed to humidity.
- Damp proofing to be carried out according to local building standards.
 - When installing this product concrete subfloors that do not include damp-proofing, the moisture content measured in terms of relative humidity must not be higher than 85% (in UK and Ireland 75% according to BS 8203), or less than 2% with CM (Carbide Method).
- Refer to local standards for detailed rules and control methods.
- Stop underfloor heating for minimum 48h before installation and maintain the temperature in the room with an alternative heating source. Remain turned off for 6-7 days and then ramped up.



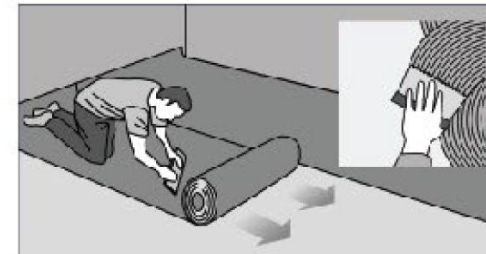
2. Before installation

- Store the rolls upright in a safe position with distance between the rolls.
- Prior to laying, allow the material, adhesive and subfloor to reach room temperature, i.e. a temperature of at least 15°C. The relative air humidity should be 30-60%. Rolls must be stored indoors at least 24 hours before installation, preferable 48 hours.
- Installation should be carried out at room temperature between 18°C to 26°C. Subfloor temperature must be at least 15°C. The relative air humidity in the premises should be 35-65%. Maintain same temperature and humidity for at least 72 hours after installation.
- If material from several rolls is used, they should have the same manufacturing serial numbers and be used in consecutive order.



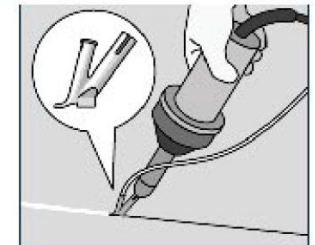
3. Rolls installation

- Cut the sheets to length and lay them out to acclimatise and relax prior to installation. This is particularly important for longer lengths.
- Sheets must be installed so that colour differences are avoided. Reverse sheets whenever possible, overlap and cut edges.
- The sheets are fully adhered with an adhesive approved for Tarkett's homogeneous vinyl sheet, spatula A1/ A2. See the adhesive manufacturer's instruction regarding coverage, open time etc. Example of suitable adhesives can be found at www.tarkett-asia.com
- Rub the face surface down thoroughly to ensure that the floor covering makes good contact with the adhesive and that all air is expelled. Make sure that the tool used for rubbing down the floor covering does not scratch the surface. A broom is not suitable for this purpose. Use a floor roller (approx. 65 kg) and roll crosswise over the floor.



4. Hot welding

- The sheets are hot welded. Do not weld until the adhesive has bonded completely, wait 24-48h. The joints are chamfered or grooved to about 3/4 of the thickness using a hand grooving tool or machine prior to welding.
- Weld with hot-air and Tarkett Speed Welding Nozzle. Welded seams must cool to room temperature before trimming in two steps, rough and fine trimming.



5. After installation

- Always protect the floor with thick paper, hard board or similar during the construction period. If using tape, this must not be applied directly to the floor surface.
- **IMPORTANT!** Restrict foot traffic for 24 hours after installation. No heavy traffic, rolling loads or furniture placement for 72 hours after installation. Most suppliers of floor adhesives specify 72 hours before the final strength is achieved.

Please contact your local representative for any questions. Tarkett accepts no liability for adhesives and levelling compounds used, including those recommended.

MAINTENANCE INSTRUCTIONS

Modern day-room cleaning aims at a reduction of wet cleaning procedures and their replacement by drier cleaning techniques. For example is the usage of pre-impregnated mops laundered centrally as well as full usage of appropriate machines to prefer.

This makes work easier for the cleaning staff, is more effective and influences the environment as little as possible. Less cleaning chemicals and less fresh water are used. This way the cleaning procedures yield improved results of a constant quality. Somplan 350, 500, 600, 700 collections by Tarkett have a PUR reinforced wear layer which minimizes the use of cleaning chemicals.

PREVENTIVE CARE

- To help protect your floorcovering from varying levels of traffic and also as the first defense against the weather, we strongly recommend that barrier mats be installed at entry points to the building to limit the amount of wet and dry soiling. About 80% of all the dirt on the floor that has to be cleaned off is brought in from outside. And 90% of that can be avoided by effective entrance matting.
- The less dirt that comes in through the entrance, the lower the maintenance requirements.

INITIAL SITE CLEANING

- Always protect the floor with thick paper, hard board or similar during the construction period. Please ensure before carrying any wet cleaning:
 - all joints are hot welded
 - the adhesive is fully cure
 - all trace of adhesive is removed
- An initial site clean is always to be recommended before using the new flooring: vacuum, sweep or damp-mop the area to remove loose dirt and building dust. A combined scrubber/dryer with brushes or white/yellow pads are very effective to clean large areas. Use solution with low pH, to be able to pick up dust from construction work.

GENERAL ADVICE

- Resilient floors are damaged by solvents.
- Wipe up any spilt oil immediately because it may damage the surface.
- Black rubber wheels and rubber feet can discolour.
- All chair legs must have protective feet.
- Remember that light colours need more frequent cleaning

DAILY CLEANING



- **Daily Cleaning:** Dry-or-damp-mopping



- **Machine cleaning:** in order to achieve good results, clean the floor gently with a combined scrubber-dryer machine & medium hard brushes or preferably red pads.
- **Cleaning chemicals:** If wet cleaning is necessary, use a neutral floor cleaner. Wet-rooms may necessitate occasional cleaning with acidic cleaning agents, pH 3 to 5, in order to remove residual lime and soap.
- **Warning!** Always follow dosage instructions carefully!
- **Removing marks:** Treat marks immediately. Use white/red nylon pads moistened with methylated spirits, cleaning spirit or neutral detergent. Wipe one more time with clean water.

DAILY CLEANING



- **Heavy wear and soiling necessitates machine cleaning:** Apply the cleaning solution (a fairly strong cleaning agent, PH 10-11 after dilution) to the flooring and allow to penetrate for 5-10minutes. Clean the floor using a heavy single scrub machine and red cleaning pad. Vacuum away the dirty water immediately. Rinse with clear water. Allow the floor to dry and then apply the maintenance system as per the instructions above.

If any doubts or clarifications should be needed, please contact your local Tarkett representative for further information.