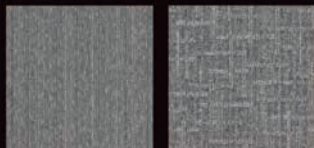




TOLI CARPET TILE
GRAND ART

GA-400 series · GA-500 series

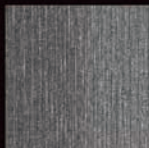
GA-400A 2 designs 10 colors



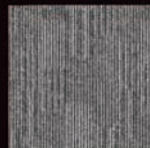
Ripple

Cross

GA-590 1 design 2 colors



GA-560 1 design 3 colors



GA-400RS 2 designs 4 colors



Fine stripe

Thick stripe

GA-580 1 design 3 colors



GA-550 1 design 7 colors



GA-400S 2 designs 12 colors



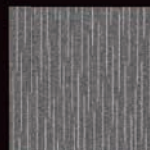
Stripe I

Stripe III

GA-570 1 design 3 colors



GA-540 1 design 7 colors



GA-400 1 design 25 colors



Self-adhesive

GA-400N [Partly stocking colors]



Color numbers of Best coordination have common colored yarn.
Such combination enables an infinity of easy and nice design on your floor.



GA-400 series is using solution-dyed polypropylene yarn, which is suitable for easy and economical coordination for middle-low traffic areas.



GA4003 · GA4025 · GA4028 · GA4031 · GA4041 · GA4042 · GA4043 (See p.13 of brochure)



GA4601R (See p.10 of brochure) · GA4004 (See p.13 of brochure)



Three additional patterns released in GA-500 series will serve for wider variation of space coordination.



GA-590

Ripple-like pattern with mild gradation.
By the combination with GA-400, various floor designs can be created.

Combination of Best coordination colors will create the functional office image.



GA5902·GA4003



The combination of Best coordination colors enables floor zoning in unified image.



GA5901·GA4035



Composition

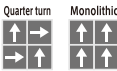
Pile Solution-dyed polypropylene 100%
Backing PVC and Glass Fiber

Specification

Pile height H4.5mm/L3mm
Textured Loop Pile

Overall thickness 7mm
Size 500mm×500mm
Pile density 1/10 gauge 12.5 stiches/inch
Package 20pcs/box=5m²/box

Flame-Retardant Performance Test No.E2180233
Antistatic property on human body: 1.0 kv or less

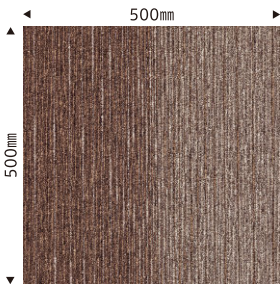


- Can be installed either monolithic or quarter turn.
- But in case of monolithic installation, due to the characteristics of polypropylene materials, indentation, color shading and joints of tiles may stand out.
- With monolithic installation, if the color difference and joints of each carpet tile are conspicuous, replace the position of some tiles.
- GA-590 has 2 types of gradation (getting darker from right to left and vice versa), which are randomly packaged in cartons.
- Gradation pattern may not be smoothly linked between tiles due to manufacturing reason.

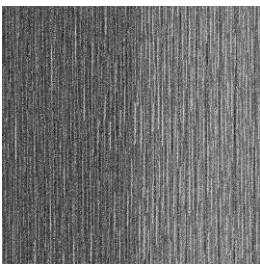
Recommended adhesive	Subfloor	Required Qty of Adhesive
Installed with tackifier adhesive (ECO GA CEMENT)	Steel/Plastic/Vinyl Tile	40 ~ 60g/m ²
	Dried mortar/Wooden flooring(plywood, etc.)	60~100g/m ²

Color number	Best coordination	
GA5901	GA4032	GA4035
GA5902	GA4001	GA4003

- Best coordination: Color numbers of Best coordination have common colored piles, which enables easy and nice combination when installed in the same area. Colors may not be smoothly linked between tiles due to lot or pattern difference.



GA5901



GA5902



GA5901

GA-580

Dynamic stripes are well described by delicate textures.
Quality design like woven fabric.

Luxury texture of GA-580 will grade up your room.



GA5801



Combined with GA-400 as an accent, floor design will be harmonized in the total interior design.



GA5802-GA4035



Composition

Pile Solution-dyed polypropylene 100%
Backing PVC and Glass Fiber

Specification

Pile height H4.5mm/L3mm
Textured Loop Pile
Overall thickness 7mm
Size 500mm×500mm
Pile density 1/10 gauge 11.5 stiches/inch
Package 20pcs/box=5m²/box

Flame-Retardant Performance Test No.E2180232
Antistatic property on human body: 1.0 kv or less



F☆☆☆☆
J18-21145

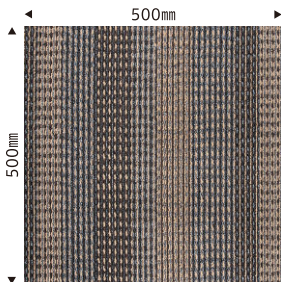


- Can be installed either monolithic or quarter turn.
- But in case of monolithic installation, due to the characteristics of polypropylene materials, indentation, color shading and joints of tiles may stand out.
- With monolithic installation, if the color difference and joints of each carpet tile are conspicuous, replace the position of some tiles.

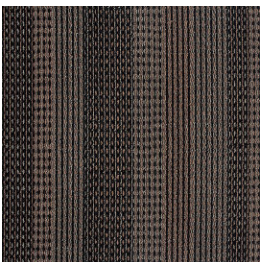
Recommended adhesive	Subfloor	Required Qty of Adhesive
Installed with tackifier adhesive (ECO GA CEMENT)	Steel/Plastic/Vinyl Tile	40 ~ 60g/m ²
	Dried mortar/Wooden flooring(plywood, etc.)	60~100g/m ²

Color number	Best coordination
GA5801	GA4003
GA5803	GA4004

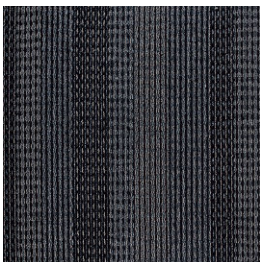
- Best coordination: Color numbers of Best coordination have common colored piles, which enables easy and nice combination when installed in the same area. Colors may not be smoothly linked between tiles due to lot or pattern difference.



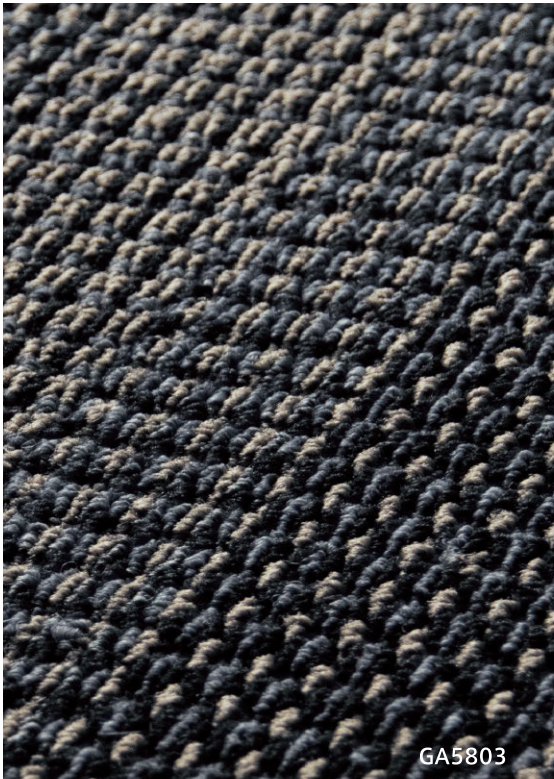
GA5801



GA5802



GA5803



GA5803

GA-570

Beautiful texture made by the mixture of piles with different shading.
Its subtle design can create an elegant atmosphere in your space.

Surrounded by GA-570 in quiet texture,
vivid colors will get accentuated further.



GA5703 · GA4027 · GA4028 · GA4034



Together with plain colored tiles,
subtle design of GA-570 will create relaxing space.



GA5702 · GA4035 · WTH300706 (※)



Composition

Pile Solution-dyed polypropylene 100%
Backing PVC and Glass Fiber

Specification

Pile height H4.5mm / L3mm
Textured Loop Pile

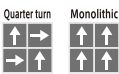
Overall thickness 7mm

Size 500mm × 500mm

Pile density 1/10 gauge 12.5 stitches/inch

Package 20pcs/box=5m²/box

Flame-Retardant Performance Test No.E2180231
Antistatic property on human body: 1.0 kv or less



- Can be installed either monolithic or quarter turn.
- But in case of monolithic installation, due to the characteristics of polypropylene materials, indentation, color shading and joints of tiles may stand out.
- With monolithic installation, if the color difference and joints of each carpet tile are conspicuous, replace the position of some tiles.

Recommended adhesive	Subfloor	Required Qty of Adhesive
Installed with tackifier adhesive (ECO GA CEMENT)	Steel/Plastic/Vinyl Tile	40 ~ 60g/m ²
	Dried mortar/Wooden flooring (plywood, etc.)	60 ~ 100g/m ²

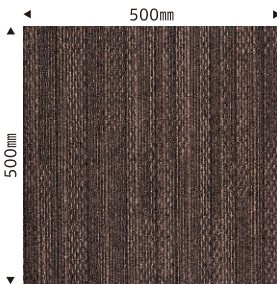
Color number	Best coordination	
GA5701	GA4032	GA4033
GA5702	GA4005	GA4035
GA5703	GA4003	GA4004

- Best coordination: Color numbers of Best coordination have common colored piles, which enables easy and nice combination when installed in the same area. Colors may not be smoothly linked between tiles due to lot or pattern difference.

※ Antibacterial & soil-resistant Wide Habaki (textile designed)
will protect the wall and relieve the strain of the guests.
Please contact TOLI sales reps for further information.



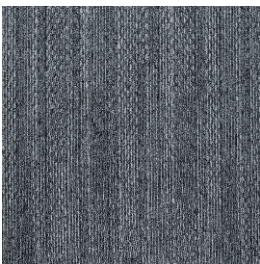
GA5701



GA5701



GA5702



GA5703

GA-560

GA-560 has an urbanized block pattern made by uneven texture of loop piles.
Combination with GA-400 is also recommendable.

GA-560 with black & plain color bordering will highly upgrade your office.



GA5604・GA4031



Borders of patterned carpet will also match well with GA-560, if both are in the same color tone.



GA5601・GA5702・WTH300704(※)



※Antibacterial & soil-resistant Wide Habaki (textile designed)
will protect the wall and relieve the strain of the guests.
Please contact TOLL sales reps for further information.

Composition
Pile Solution-dyed polypropylene 100%
Backing PVC and Glass Fiber

Specification
Pile height H4.5mm/L3mm
Textured Loop Pile

Overall thickness 7mm
Size 500mm×500mm
Pile density 1/10 gauge 13.0 stitches/inch
Package 20pcs/box=5㎡/box

Flame-Retardant Performance Test No.E2150022
Antistatic property on human body: 1.0 kv or less

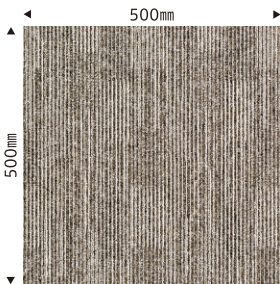


●Standard way of installation is Quarter Turn.

Recommended adhesive	Subfloor	Required Qty of Adhesive
Installed with tackifier adhesive (ECO GA CEMENT)	Steel/Plastic/Vinyl Tile	40 ~ 60g/㎡
	Dried mortar/Wooden flooring(plywood, etc.)	60~100g/㎡

Color number	Best coordination	
GA5601	GA4005	GA4035
GA5602	GA4005	—
GA5604	GA4003	GA4004

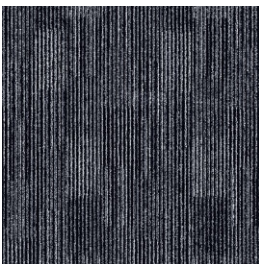
●Best coordination: Color numbers of Best coordination have common colored piles, which enables easy and nice combination when installed in the same area.
Colors may not be smoothly linked between tiles due to lot or pattern difference.



GA5601



GA5602



GA5604



GA5601

GA-550

Beautiful deep-colored stripes are well expressed by ripple-like piles. GA-550 will give a calm and luxurious impression in your space.

Vivid color of GA-550 in combination with plain-colored GA-400 will create rhythmical floor, which will stipulate workers' imagination.



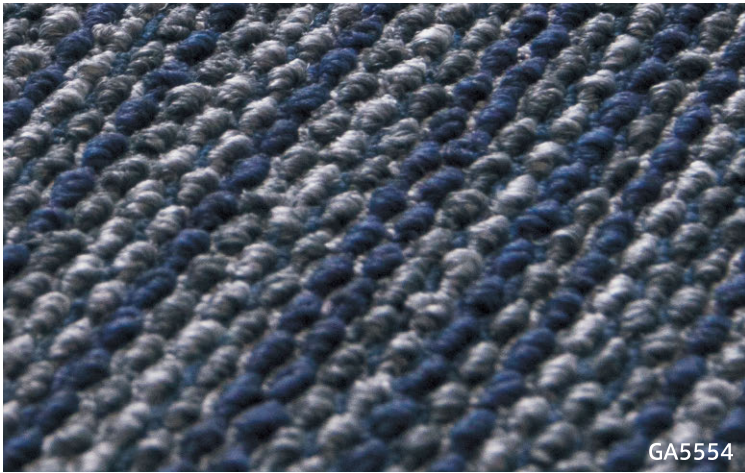
GA5557·GA4039·GA4041·GA4042



Upgrade your space with the wall and fixtures in wood grain combined with brownish carpet tiles.



GA5556·GA5601



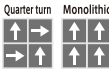
GA5554

Composition
Pile Solution-dyed polypropylene 100%
Backing PVC and Glass Fiber
Specification
Pile height H4.5mm/L3mm
Multi-Level Loop Pile
Overall thickness 7mm
Size 500mm×500mm
Pile density 1/10 gauge 13.0 stitches/inch
Package 20pcs/box=5㎡/box
Flame-Retardant Performance Test No.E2150021
Antistatic property on human body: 1.0 kv or less

- Can be installed either monolithic or quarter turn.
- But in case of monolithic installation, due to the characteristics of polypropylene materials, indentation, color shading and joints of tiles may stand out.
- With monolithic installation, if the color difference and joints of each carpet tile are conspicuous, replace the position of some tiles.



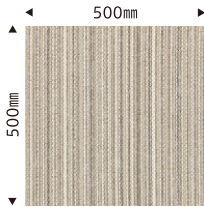
F☆☆☆☆
J15-31019



Recommended adhesive	Subfloor	Required Qty of Adhesive
Installed with tackifier adhesive (ECO GA CEMENT)	Steel/Plastic/Vinyl Tile	40 ~ 60g/㎡
	Dried mortar/Wooden flooring(plywood, etc.)	60~100g/㎡

Color number	Best coordination		
GA5551	GA4019	—	—
GA5554	GA4003	GA4004	GA4034
GA5556	GA4005	—	—
GA5557	GA4039	GA4041	GA4042

- Best coordination: Color numbers of Best coordination have common colored piles, which enables easy and nice combination when installed in the same area. Colors may not be smoothly linked between tiles due to lot or pattern difference.



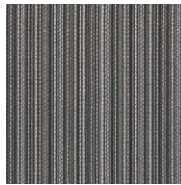
GA5556



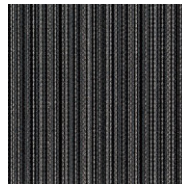
GA5551



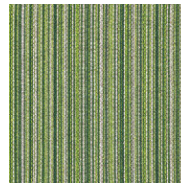
GA5552



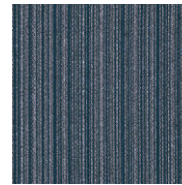
GA5555



GA5553



GA5557



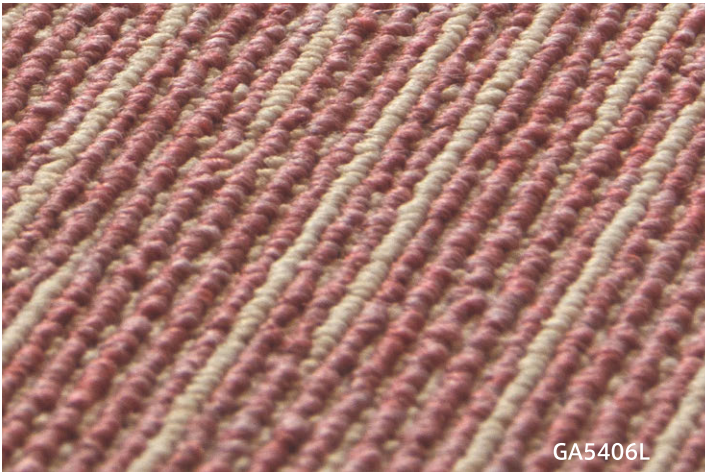
GA5554

GA-540

Characterized by its fine linear pattern.
Clear loop piles of GA-540 can coordinate in various application.

Combination of accentuated color of GA-540 and plain colors of GA-400 will create clean-cut image of floor design.

Warm and feminine colors will softly give hearty welcome to visitors.



Composition
Pile Solution-dyed polypropylene 100%
Backing PVC and Glass Fiber
Specification
Pile height H4.5mm/L3mm
Textured Loop Pile
Overall thickness 7mm
Size 500mm×500mm
Pile density 1/10 gauge 12.5 stiches/inch
Package 20pcs/box=5m²/box

Flame-Retardant Performance Test No.EO100186
Antistatic property on human body: 1.0 kv or less

●Standard way of installation is Quarter Turn.



Recommended adhesive	Subfloor	Required Qty of Adhesive
Installed with tackifier adhesive (ECO GA CEMENT)	Steel/Plastic/Vinyl Tile	40 ~ 60g/m ²
	Dried mortar/Wooden flooring(plywood, etc.)	60~100g/m ²



Color number	Best coordination	
GA5406L	GA4040	—
GA5407L	GA4001	GA4027

●Best coordination: Color numbers of Best coordination have common colored piles, which enables easy and nice combination when installed in the same area. Colors may not be smoothly linked between tiles due to lot or pattern difference.



GA-400A

[Ripple] Beautiful ripple textures randomly scattered on the tile. High-and-low piles will create rich expressions.

Cool offices can be achieved by lively color combination.






Why not combine the colors from Best Coordination to create chic space?

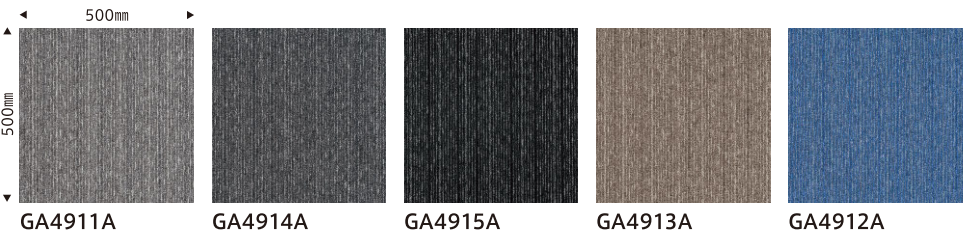


Composition
Pile Solution-dyed polypropylene 100%
Backing PVC and Glass Fiber
Specification
Pile height H5mm/L3mm
Textured Loop Pile
Overall thickness 6.8mm
Size 500mm × 500mm
Pile density 1/10 gauge 10.5 stiches/inch
Package 20pcs/box=5m²/box

- Can be installed either monolithic or quarter turn.
 - But in case of monolithic installation, due to the characteristics of polypropylene materials, indentation, color shading and joints of tiles may stand out.
 - With monolithic installation, if the color difference and joints of each carpet tile are conspicuous, replace the position of some tiles.
- Flame-Retardant Performance Test No.E2190090
Antistatic property on human body: 1.0 kv or less

 F☆☆☆☆ J19-31530	 Quarter turn	 Monolithic
Recommended adhesive	Subfloor	Required Qty of Adhesive
Installed with tackifier adhesive (ECO GA CEMENT)	Steel/Plastic/Vinyl Tile	40 ~ 60g/m ²
	Dried mortar/Wooden flooring (plywood, etc.)	60 ~ 100g/m ²

※Antibacterial & soil-resistant Wide Habaki (textile designed) will protect the wall and relieve the strain of the guests. Please contact TOLI sales reps for further information.



[Cross] Cross pattern overlapped in many layers.
Workable design with a non-directional image.

When combined with GA-400, texture of GA400A will look outstanding.



GA4932A · GA4935A · GA4001

Minimum contrast in floor design will create quiet and elegant space.



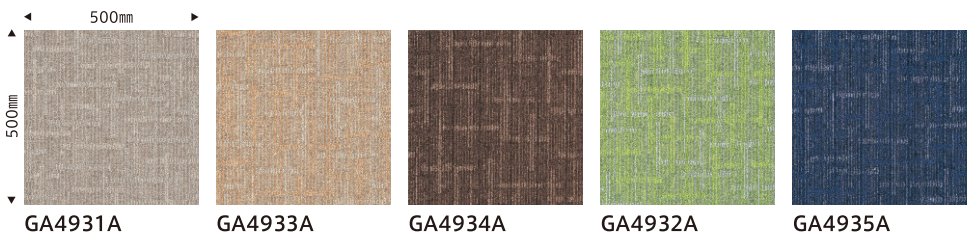
GA4931A

Color number	Best coordination	
GA4911A	GA4001	GA4003
GA4912A	GA4009	GA4027
GA4913A	GA4005	GA4035
GA4914A	GA4003	GA4004
GA4915A	GA4004	GA4031
GA4931A	GA4001	GA4005
GA4932A	GA4001	GA4042
GA4933A	GA4005	GA4019
GA4934A	GA4032	GA4033
GA4935A	GA4004	GA4034

● Best coordination: Color numbers of Best coordination have common colored piles, which enables easy and nice combination when installed in the same area. Colors may not be smoothly linked between tiles due to lot or pattern difference.



GA4934A



GA-400RS

The sister product of GA-400 with unique random stripe images, which will broaden your color coordination.

The combination of GA-400RS & GA-400 is recommended for creation of unique office.



GA4501R·GA4004

Combination of different width of stripe in the same shade will create lively and unified space.



GA4505R·GA4605R·GA4005

Composition

Pile Solution-dyed polypropylene 100%
Backing PVC and Glass Fiber

Specification

Pile height 3mm
Loop Pile
Overall thickness 6mm
Size 500mm×500mm
Pile density 1/10 gauge 14.0 stitches/inch
Package 20pcs/box=5m²/box

Flame-Retardant Performance Test No.E0970014
Antistatic property on human body: 1.0 kv or less



- Standard way of installation is Quarter Turn.
- Striped design differs on a tile-to-tile basis. After installation, in case you feel uncomfortable about the floor image, switch the tiles partially so that it will have a natural at-random image.

Recommended adhesive	Subfloor	Required Qty of Adhesive
Installed with tackifier adhesive (ECO GA CEMENT)	Steel/Plastic/Vinyl Tile	40 ~ 60g/m ²
	Dried mortar/Wooden flooring(plywood, etc.)	60~100g/m ²

Color number	Best coordination			
GA4501R	GA4001	GA4003	GA4004	GA4007
GA4505R	GA4005	GA4007	GA4032	GA4035
GA4601R	GA4001	GA4004	—	—
GA4605R	GA4005	GA4032	—	—

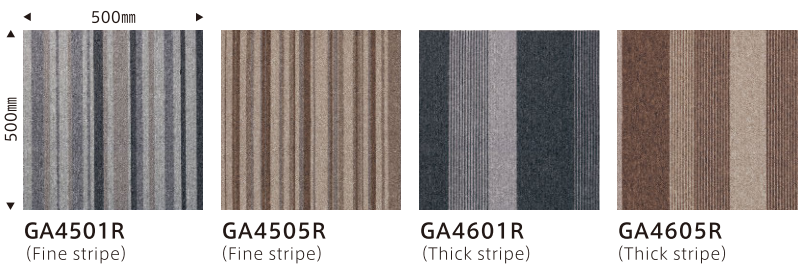
- Best coordination: Color numbers of Best coordination have common colored piles, which enables easy and nice combination when installed in the same area. Colors may not be smoothly linked between tiles due to lot or pattern difference.



GA4505R (Fine stripe)



GA4605R (Thick stripe)



GA4501R
(Fine stripe)

GA4505R
(Fine stripe)

GA4601R
(Thick stripe)

GA4605R
(Thick stripe)

GA-400S

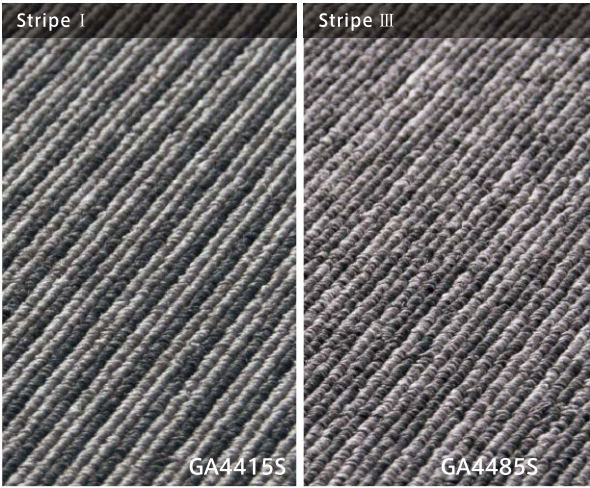
The sister product of GA-400 which has beautiful stripe images.

Striking color amid varied greys will serve to create vivid space.

Deep tone by refined stripes of GA-400S will create innovative and relaxing space.



GA4481S·GA4483S·GA4032



Composition

Pile Solution-dyed polypropylene 100%
Backing PVC and Glass Fiber

Specification

Pile height 3mm
Loop Pile
Overall thickness 6mm
Size 500mm×500mm
Pile density 1/10 gauge 14.0 stiches/inch
Package 20pcs/box=5m²/box

●Standard way of installation is Quarter Turn.

●Sometimes the crossover points of the joints may appear to be misaligned in stripe-pattern products.



F☆☆☆☆
J04-30095



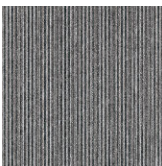
Recommended adhesive	Subfloor	Required Qty of Adhesive
Installed with tackifier adhesive (ECO GA CEMENT)	Steel/Plastic/Vinyl Tile	40 ~ 60g/m ²
	Dried mortar/Wooden flooring(plywood, etc.)	60~100g/m ²

Flame-Retardant Performance Test No.E0970014
Antistatic property on human body: 1.0 kv or less

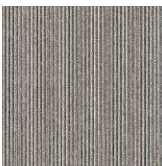
Color number	Best coordination	
GA4405S	GA4004	GA4005
GA4413S	GA4004	GA4010
GA4415S	GA4001	GA4004
GA4481S	GA4005	GA4035
GA4482S	GA4019	GA4035
GA4483S	GA4032	GA4035
GA4484S	GA4004	GA4031
GA4485S	GA4001	GA4003
GA4486S	GA4003	GA4004
GA4487S	GA4032	GA4033
GA4488S	GA4040	GA4043
GA4489S	GA4041	GA4042

●Best coordination: Color numbers of Best coordination have common colored piles, which enables easy and nice combination when installed in the same area. Colors may not be smoothly linked between tiles due to lot or pattern difference.

[Stripe I]



GA4415S



GA4405S



GA4413S

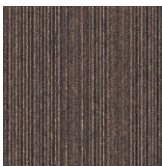
[Stripe III]



GA4481S



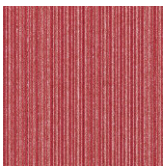
GA4483S



GA4487S



GA4482S



GA4488S



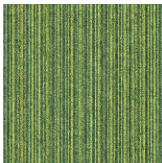
GA4485S



GA4486S



GA4484S



GA4489S

GA-400

GA-400 is using solution-dyed polypropylene yarn which cannot be easily discolored. Suitable for middle-low traffic areas in the office.

Color palette of GA-400 enables free and easy coordination on your interior design.



GA4003・GA4025・GA4028・GA4031・GA4041・GA4042・GA4043



- Composition
- Pile

Solution-dyed polypropylene 100%
- Backing

PVC and Glass Fiber
- Specification
- Pile height

3mm
- Overall thickness

Loop Pile
- Size

500mm×500mm
- Pile density

1/10 gauge 14.0 stiches/inch
- Package

20pcs/box=5m²/box

●Standard way of installation is Quarter Turn.



Recommended adhesive	Subfloor	Required Qty of Adhesive
Installed with tackifier adhesive (ECO GA CEMENT)	Steel/Plastic/Vinyl Tile	40 ~ 60g/m ²
	Dried mortar/Wooden flooring (plywood, etc.)	60~100g/m ²

Flame-Retardant Performance Test No.EO970014
Antistatic property on human body: 1,0 kv or less



GA4042



★ Easy coordination by GA-400RS & GA-400S(p.11)

Color number	Best coordination			
GA4001	GA4415S	GA4485S	GA4501R	GA4601R
GA4003	GA4485S	GA4486S	GA4501R	—
GA4004	GA4405S	GA4413S	GA4415S	GA4484S
	GA4486S	GA4501R	GA4601R	—
GA4005	GA4405S	GA4481S	GA4505R	GA4605R
GA4007	GA4501R	GA4505R	—	—
GA4010	GA4413S	—	—	—
GA4019	GA4482S	—	—	—
GA4031	GA4484S	—	—	—
GA4032	GA4483S	GA4487S	GA4505R	GA4605R
GA4033	GA4487S	—	—	—
GA4035	GA4481S	GA4482S	GA4483S	GA4505R
GA4040	GA4488S	—	—	—
GA4041	GA4489S	—	—	—
GA4042	GA4489S	—	—	—
GA4043	GA4488S	—	—	—

◆ Easy coordination by GA-400 & GA-500

Color number	Best coordination			
GA4001	GA5407L	GA5902	—	—
GA4003	GA5554	GA5604	GA5703	GA5801
	GA5902	—	—	—
GA4004	GA5554	GA5604	GA5703	GA5803
GA4005	GA5556	GA5601	GA5602	GA5702
GA4019	GA5551	—	—	—
GA4027	GA5407L	—	—	—
GA4032	GA5701	GA5901	—	—
GA4033	GA5701	—	—	—
GA4034	GA5554	—	—	—
GA4035	GA5601	GA5702	GA5901	—
GA4039	GA5557	—	—	—
GA4040	GA5406L	—	—	—
GA4041	GA5557	—	—	—
GA4042	GA5557	—	—	—

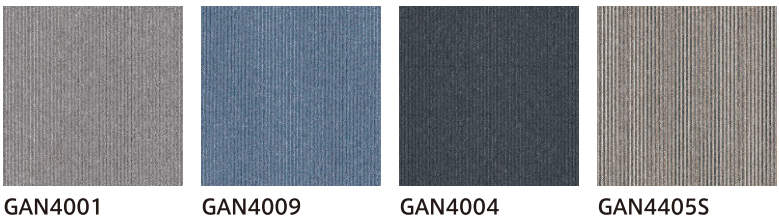
● Best coordination: Color numbers of Best coordination have common colored piles, which enables easy and nice combination when installed in the same area. Colors may not be smoothly linked between tiles due to lot or pattern difference.

Self-adhesive GA-400N [Partly stocking colors]



Made-to-order
Minimum Order Qty : 100m² per color
Production : Approx. 3 weeks
(for more than 400m² of orders, please contact TOLI sales reps.)

composition & specification
For base materials of GA-400, GA-400S & GA-400RS.
※On ordering, please specify GAN + color number.
(e.g.) Self-adhesive model for GA4003 is GAN4003

[Stocking Colors]



GA-400's sister product which has pre-applied adhesive on the back. Easy to install and very much suitable for free access floor panels. Minimum ordering quantity of made-to-order colors has been decreased with shorter lead time for easier adoption.



Flame-Retardant Performance Test No.EO080104
Antistatic property on human body: 1.0 kv or less

Quarter turn
↑ ↑
↓ ↓

- Standard way of installation is Quarter Turn.
- Due to striped design of GAN4405S, the cross over point of joints may appear to be misaligned, which is just an optical illusion.



Pre-applied adhesive on the back

Subfloor Application Table for GA-400N

Subfloor	Applicable(OK) or Not Applicable(N/A)
Access floor	OK
Metallic or resin surface	OK
Concrete	N/A
PVC tile / PVC sheet	OK
Stone	OK
Linoleum	N/A
Mortar	N/A
Particle Board	N/A
Carpet/Needle punch	N/A
Underlay sheet for carpet tile	N/A
Floor heating	N/A
Wood Flooring	△※

※The color and quality might be affected.

GA-400N Application & Usage

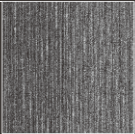
- Suitable on the top of raised floors in the office, such as free access floors and OA floors made of metal or resin. However, please note the adhesive strength may weaken if the surface is extremely uneven. Please note subfloors surfaced with polypropylene and a few others might weaken the adhesive power. Please contact TOLI sales reps for further information.
- Can also be installed on flat-surfaced vinyl tiles or vinyl sheets. In case you need to remove the carpet tiles afterwards, apply the wax sufficiently on the top of them before installation.
- Cannot be used in the places where heavy trolleys and carts frequently come and go
- Cannot be used on the subfloor that tends to become dusty such as mortar, nor the subfloor that may extend or shrink such as floor heating.

GA-500 series

See brochure

GA-590

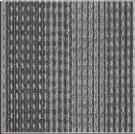
Ripple-like pattern with mild gradation. By the combination with GA-400, various floor designs can be created.



p.2

GA-580

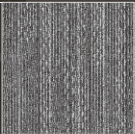
Dynamic stripes are well described by delicate textures. Quality design like woven fabric.



p.3

GA-570

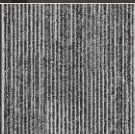
Beautiful texture made by the mixture of piles with different shading. Its subtle design can create an elegant atmosphere in your space.



p.4

GA-560

GA-560 has an urbanized block pattern made by uneven texture of loop piles. Combination with GA-400 is also recommendable.



p.5

GA-550

Beautiful deep-colored stripes are well expressed by ripple-like piles. GA-550 will give a calm and luxurious impression to your space.



p.6

GA-540

Characterized by its fine linear pattern. Clear loop piles of GA-540 can coordinate in various application.



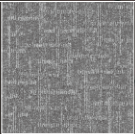
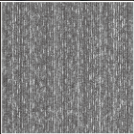
p.7

GA-400 series

See brochure

GA-400A

New product line of GA-400A was added to make GA-400 series more attractive with its rich 3-D textured loop.



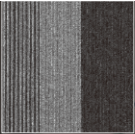
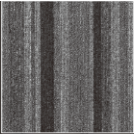
Ripple

Cross

p.8-9

GA-400RS

The sister product of GA-400 with unique random stripe images, which will broaden your color coordination.



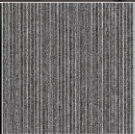
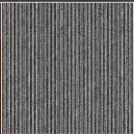
Fine stripe

Thick stripe

p.10

GA-400S

The sister product of GA-400 which has beautiful stripe images.



Stripe I

Stripe III

p.11

GA-400

GA-400 is using solution-dyed polypropylene yarn, and is suitable for easy and economical coordination for middle-low traffic areas in the office.



p.12-13

GA-400N

Pre-applied adhesive on the back enables easy and quick installation on raised floor.

p.13

